

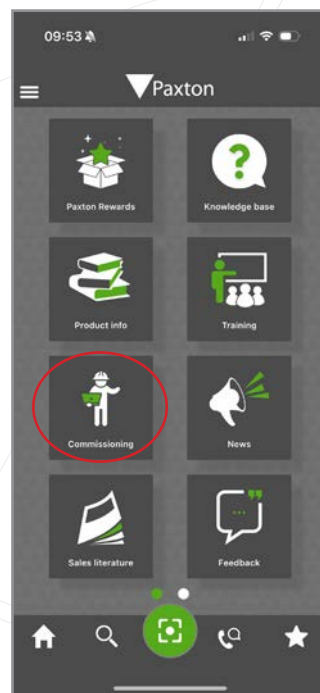
# Paxton Installer - Commissioning feature

## Overview

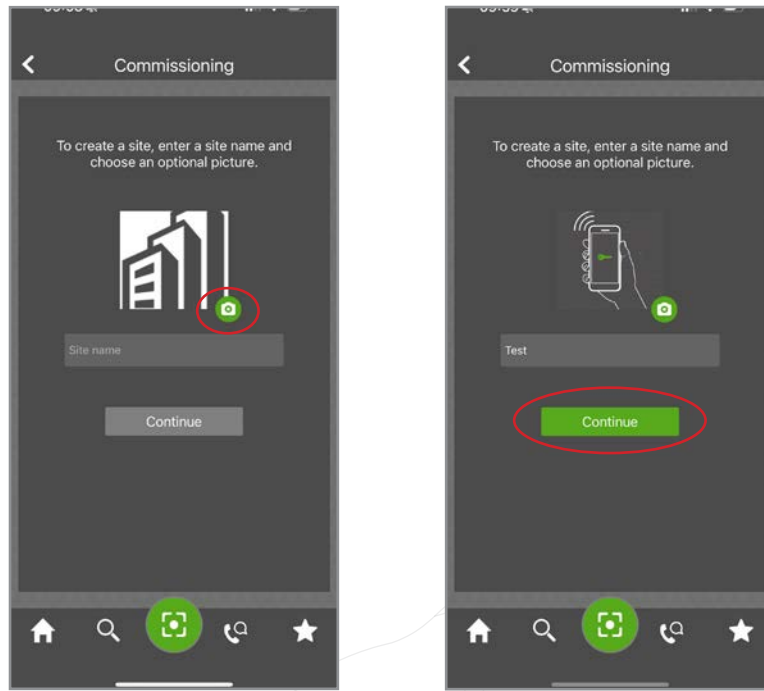
The Commissioning feature within Paxton Installer helps to make the process of naming a controller much simpler, by allowing you to assign the name to the controller or PaxLock when installing the product in the desired location. This negates the need to write any information down, which can easily be mislaid, and allows you to store all the door information in a central location to be then imported into the Net2 software.

## How to Commission a site

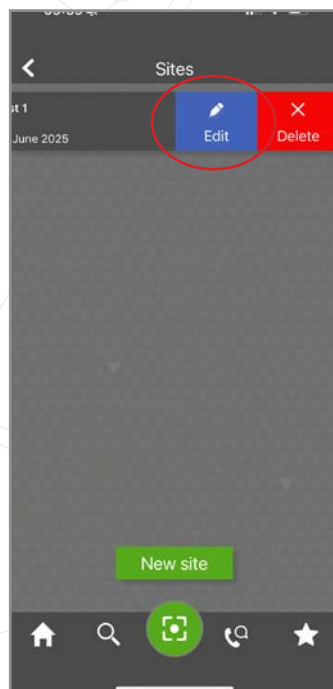
1. Tap 'Commissioning'.



2. To create a new site, you will need to name the site. You also have the option to add an image if you would like to.



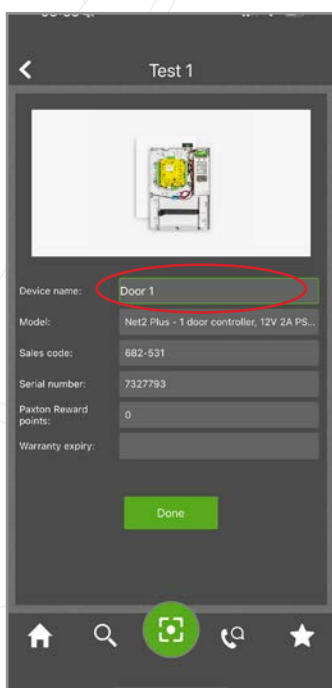
**Note:** You can edit the name of your site or image at any time, simply by sliding left on the site and tapping 'Edit'.



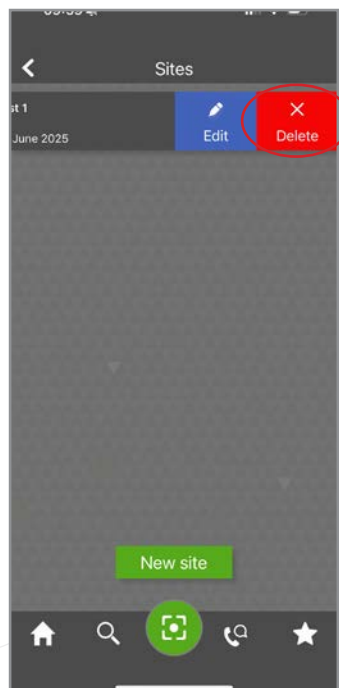
3. Once you've created your site, you will be able to scan the products for your site.



4. When you scan a product, it will also ask you to name the product you have just scanned ie "Door 1".



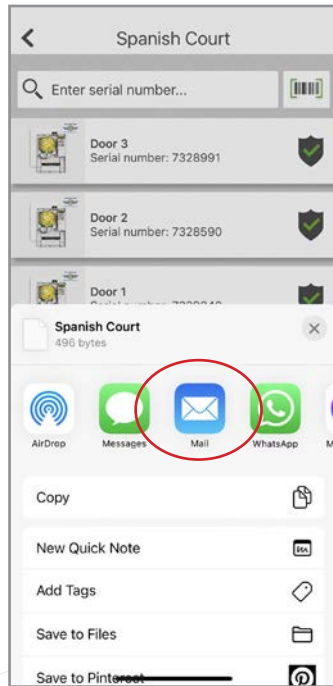
**Note:** You can remove any scanned product from your site, simply by sliding left on the product and selecting 'Delete'.



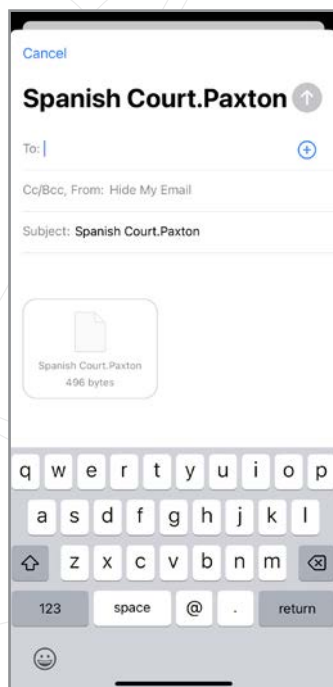
5. To export the site into the Net2 system set up, tap 'Export'.



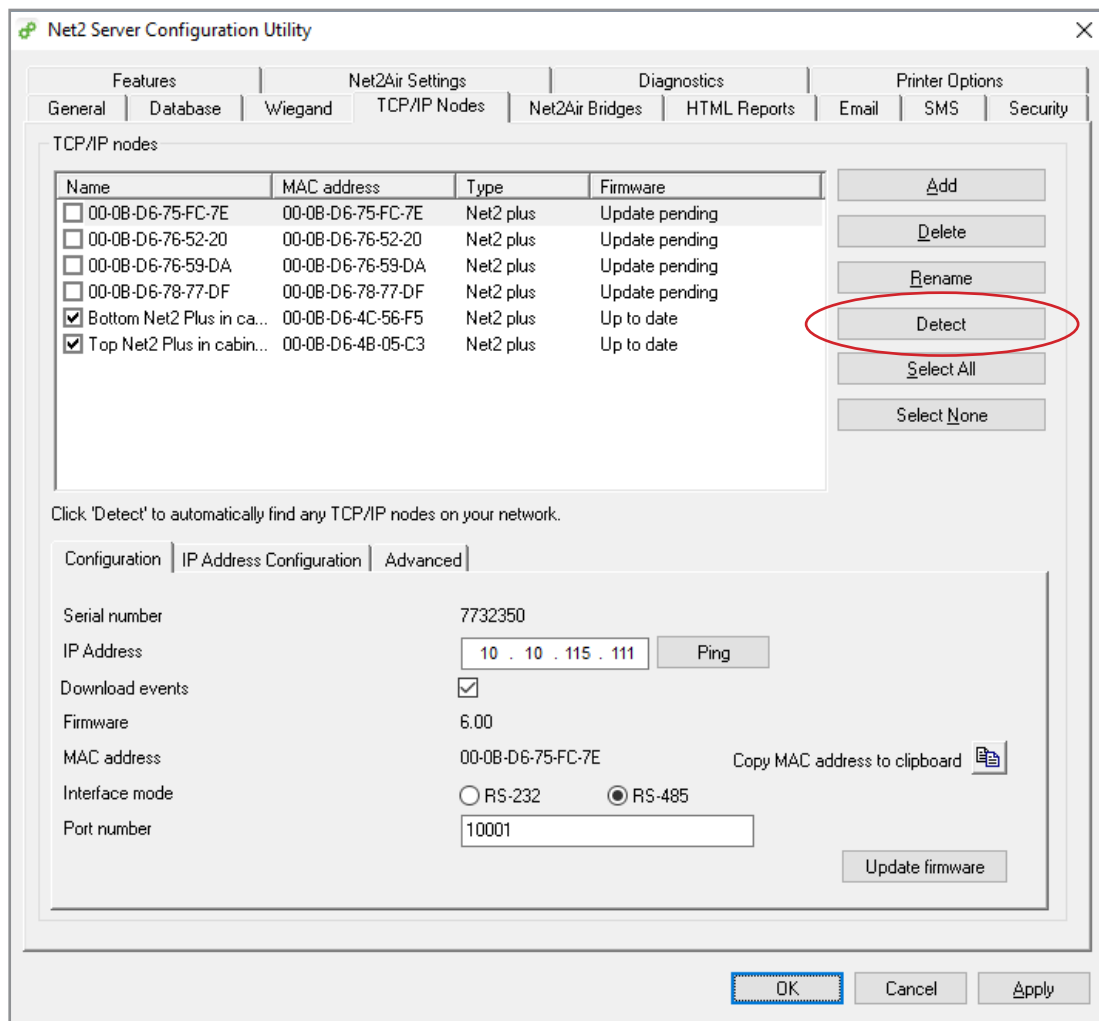
6. Tap 'Email'



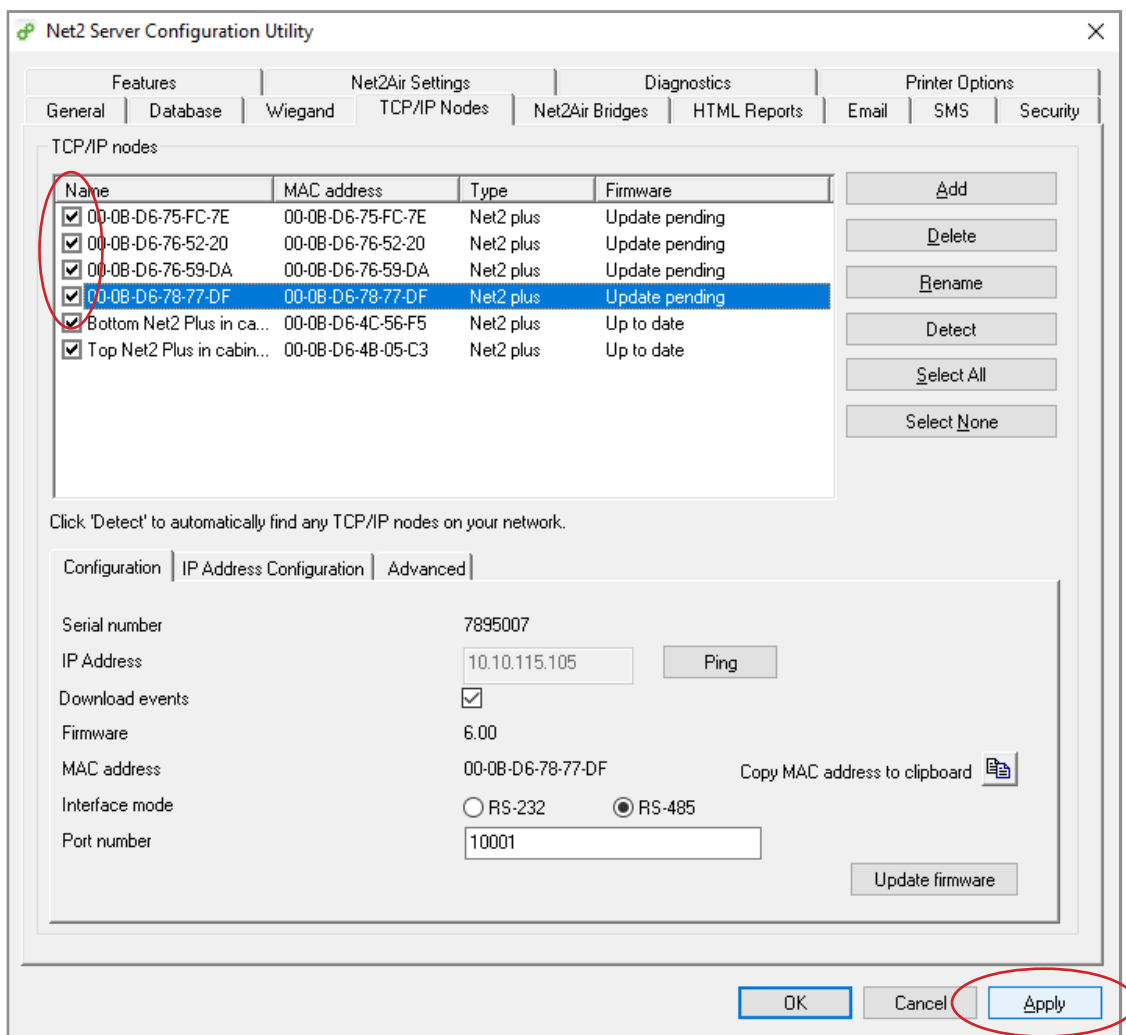
7. You will need to email the commissioning file to yourself so you can import the file into the Net2 system.



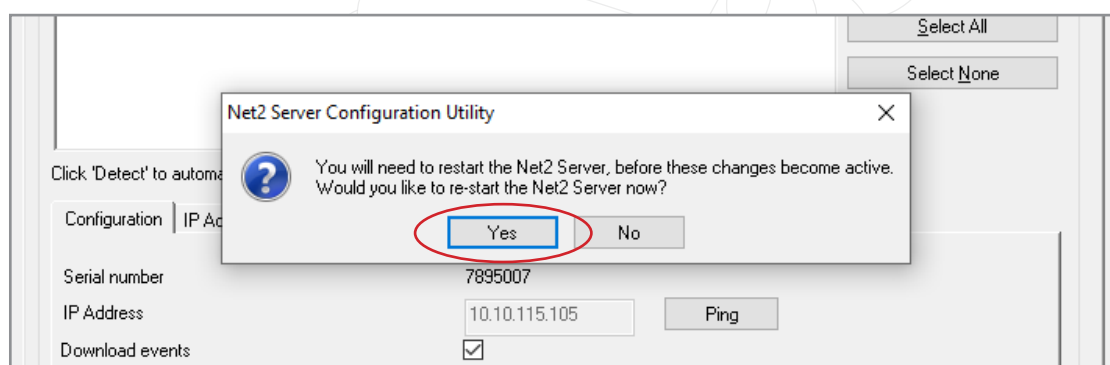
8. Go into the Net2 Configuration Utility and detect your controllers.



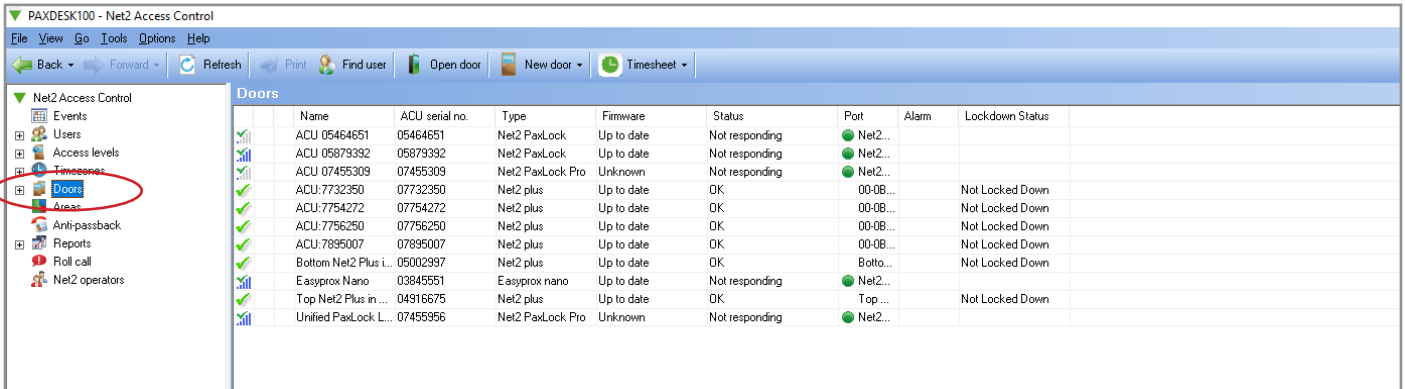
9. Once you have detected the controllers, you will need to tick each one and then click 'Apply'.



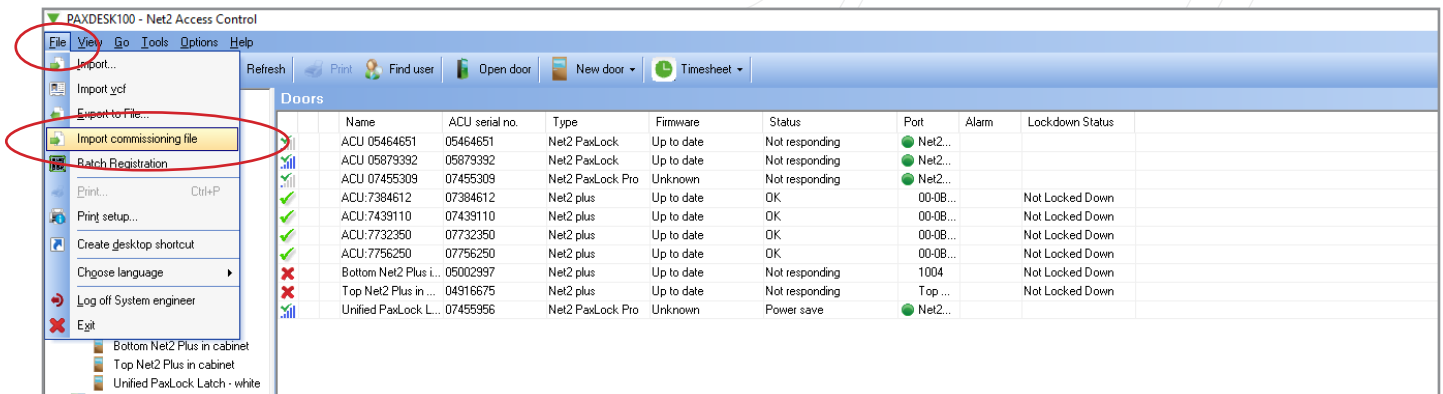
10. A pop up will appear asking if you would like to re-start the Net2 server, click 'Yes'.



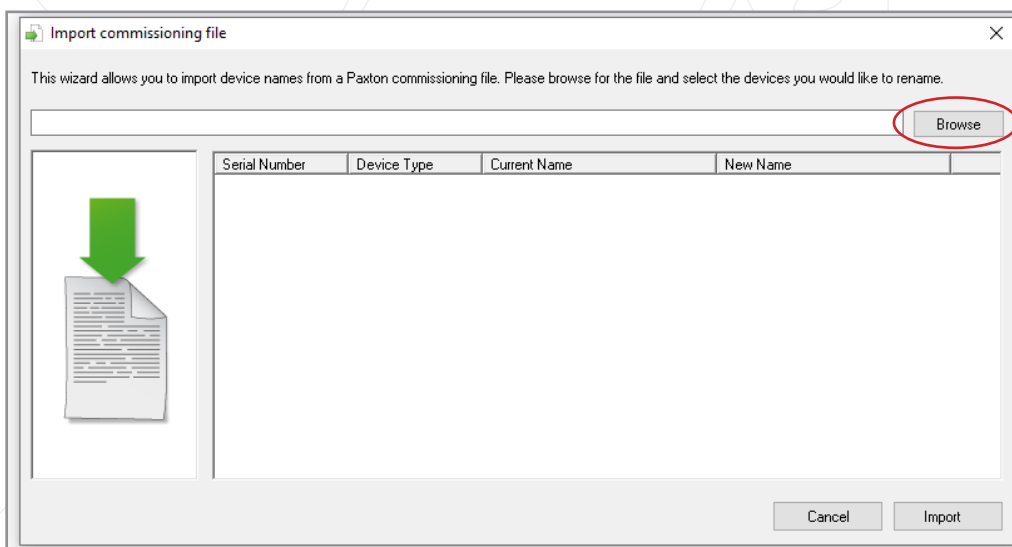
11. You will now need to go into Net2 and click on **'Doors'**; here you will be able to see the controllers you have just detected.



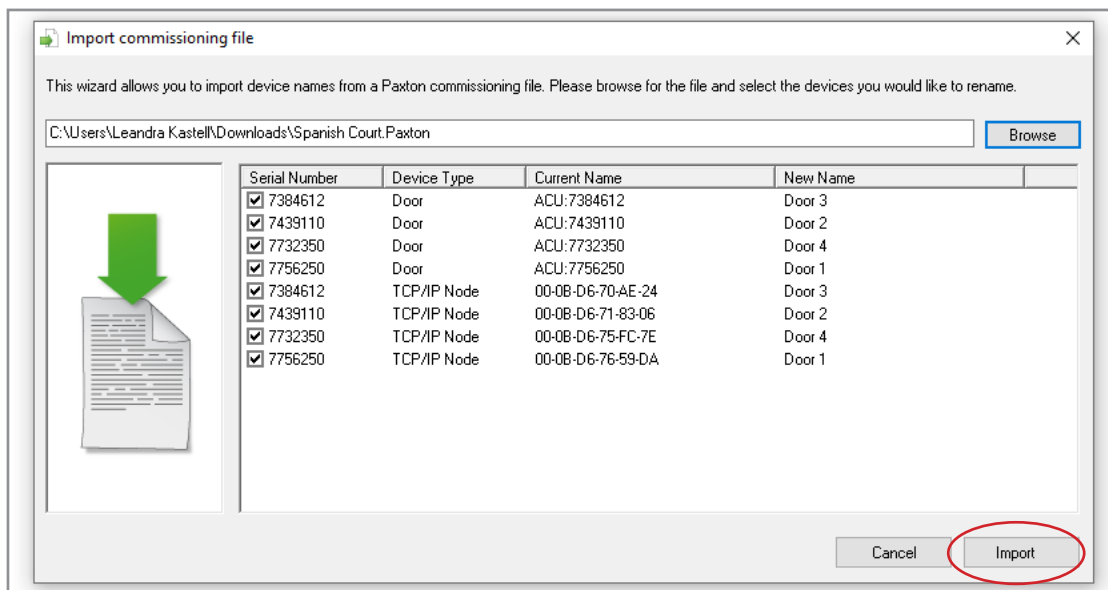
12. Now you need to import the commissioning file from the Paxton Installer app. Go to **'File'** and click **'Import Commissioning File'**.



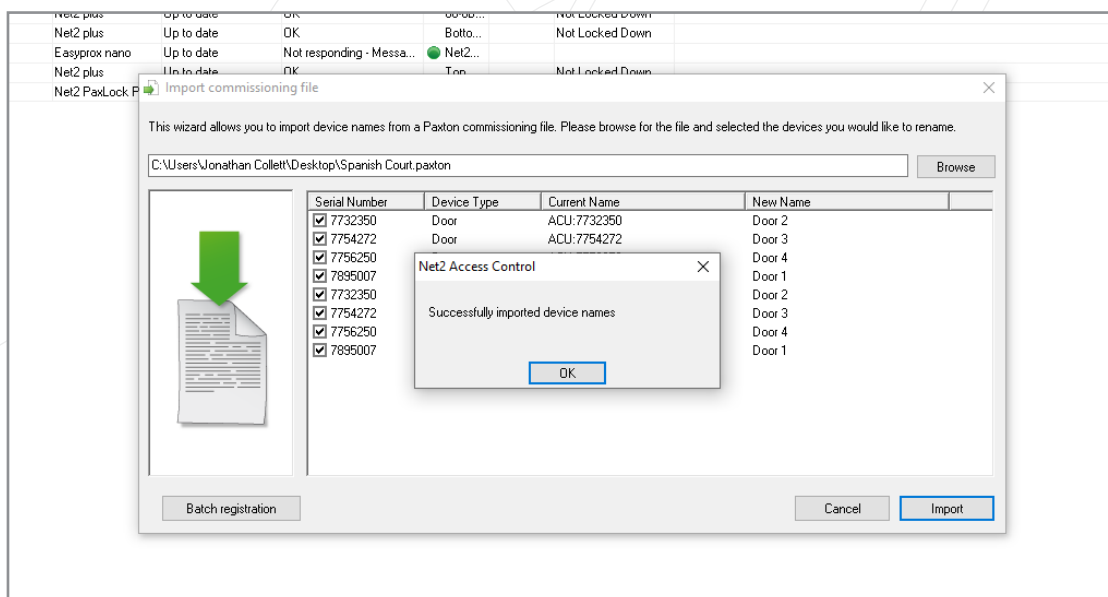
13. Click **'Browse'** and select the commissioning file.



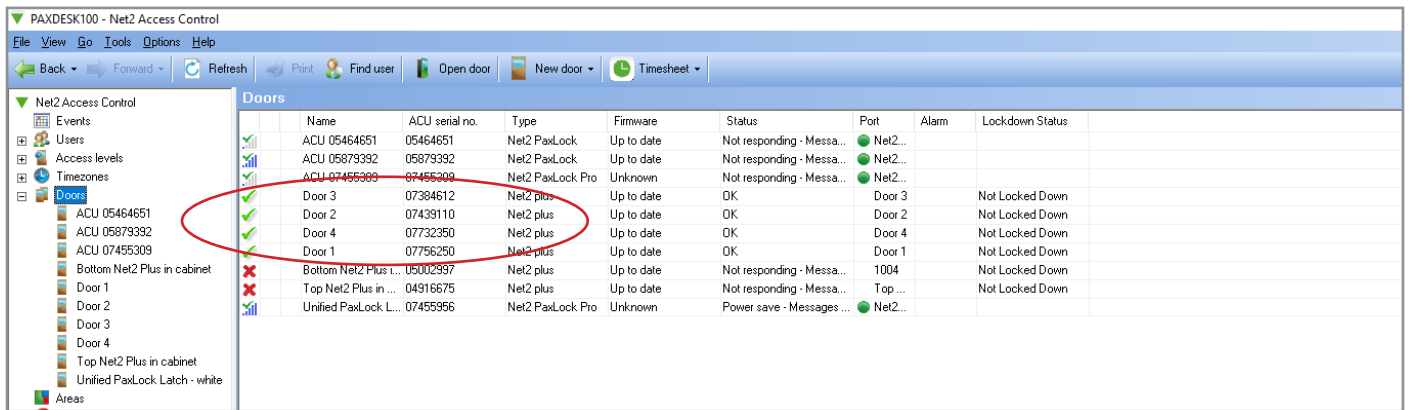
14. It will now show you the controllers with their current name and the new name you gave them in the Paxton Installer app. Now click 'Import'.



15. A pop up will appear to show importing the device names has been successful.



16. You will now see you have successfully imported the commissioned site from the Paxton Installer app.



The screenshot shows the PAXDESK100 - Net2 Access Control software interface. The main window displays a table of doors with the following columns: Name, ACU serial no., Type, Firmware, Status, Port, Alarm, and Lockdown Status. A red circle highlights the 'Doors' section in the left sidebar and the corresponding rows in the main table.

Name	ACU serial no.	Type	Firmware	Status	Port	Alarm	Lockdown Status
ACU 05464651	05464651	Net2 PaxLock	Up to date	Not responding - Messa...	Net2...		
ACU 05879392	05879392	Net2 PaxLock	Up to date	Not responding - Messa...	Net2...		
ACU 07455309	07455309	Net2 PaxLock Pro	Unknown	Not responding - Messa...	Net2...		
Door 3	07384612	Net2 plus	Up to date	OK	Door 3		Not Locked Down
Door 2	07439110	Net2 plus	Up to date	OK	Door 2		Not Locked Down
Door 4	07732350	Net2 plus	Up to date	OK	Door 4		Not Locked Down
Door 1	07756250	Net2 plus	Up to date	OK	Door 1		Not Locked Down
Bottom Net2 Plus in cabinet	Bottom Net2 Plus i... 05002997	Net2 plus	Up to date	Not responding - Messa...	1004		Not Locked Down
Door 1	Top Net2 Plus in ... 04916675	Net2 plus	Up to date	Not responding - Messa...	Top ...		Not Locked Down
Door 2	Unified PaxLock L... 07455956	Net2 PaxLock Pro	Unknown	Power save - Messages ...	Net2...		

